

**Weight parameters**

| Weight parameters                         | kg      | lb      |
|---|---------|---------|
| Chassis equipped with lift cylinders      | 53,400  | 117,069 |
| Standard cabin                            | 13,600  | 30,339  |
| Vehicle weight                            | 67,000  | 147,400 |
| Rated load                                | 91,000  | 200,200 |
| The maximum gross weight of the vehicle * | 158,000 | 347,600 |

\* Maximum gross weight of the vehicle include alternative means, all the accessories, with full fuel tank and

load. Weight distribution, axle load

|      | Maebashi | Rear axle |
|------|----------|-----------|
| Load | 48%      | 52%       |
| Full | 32%      | 68%       |

**Maintenance work capacity**

| Maintenance work capacity     | L          | US gal |
|-------------------------------|------------|--------|
| And a filter engine crankcase | 134        | 35.4   |
| Transmission and Filters      | 100        | 26.4   |
| cooling system                | 300        | 79.3   |
| Fuel tank                     | 1,150      | 303.8  |
| Hydraulic tank                | 665        | 175.7  |
| Wheel reducer (total)         | 57         | 15.1   |
| Differential                  | 61         | 16.1   |
| Front suspension (Each)       | 30         | 8.0    |
| The rear suspension (each)    | twenty one | 5.5    |
| Power output apparatus        | 4          | 1.1    |

**Optional equipment**

Optional equipment may vary. For more information, please contact Xugong agents.

- Cold weather package
- View monitoring system
- silencer
- Capacity cargo compartment (suitable for a small proportion of the material)
- Cargo liner wear (applicable to serious wear and tear of materials)
- Tire 27.00R49 (E4)
- Weighing System

**Standard configuration**

**power system**

- Air filter (3)
- high/low temperature
- electric injection pump
- intake auxiliary heating
- Fuel filter / water separator
- engine oil pan drain ball valve
- turbocharger (2)
- Braking System
- Transmission
- heavy-duty rear
- 115 A alternator
- main power switch
- Maintenance-free batteries, 12V (4), 190 AH
- alternator

**Other standard equipment**

- carriage assembly
- cabin safety pin
- suspension cylinders
- Fuel tank
- Fuel, fast refueling device
- Hydraulic tank
- rim 19.5 × 49
- tire 27.00-49 (E4)
- stone row
- Before towing hook
- Automatic central lubrication
- fender
- cargo exhaust gas heating
- Parts manuals, maintenance manuals, operation manuals insurance

**The driver environment**

- ROPS cab
- Intelligent Vehicle Monitoring
- GPS global positioning system
- in the control display
- main drive belt detector
- Left / right door close detection
- detection compartment fall into
- CAN bus communication keyboard
- power outlet, 24V
- diagnostic connector port
- Radio
- heating mirror
- defrost outlet
- carriage lifting lever
- pedals
- Horn, electric
- Cab dome light
- ashtray and cigarette lighter
- coat hook
- Cup holder
- air suspension driver seat
- passenger seat
- tilt-telescoping steering wheel
- visor
- floor mats
- Left / Right hinged door
- The windshield wiper and washer
- Laminated glass
- Heated mirror mirror
- Guard
- engine oil pan
- Transmission / front propeller



# XDM91 mechanical transmission dump truck



Xuzhou Xugong Mining Machinery Co., Ltd.

Address: China Xuzhou, Jiangsu Province Economic Development Zone,

Road No. 39 unified national customer service hotline: 400-110-9999

As the technology continues to update, specifications are subject to change without notice.

Copyright Xugong digging machine, without the written XCMG digging machine license, any part of the contents of this catalog may be reproduced or copied for any purpose.

XDM91-2015 First Edition 1st

**XCMG mining machinery division**

XCMG EXCAVATOR MACHINERY BUSINESS DEPARTMENT

## engine

Model ..... CumminsQST30-C1050  
Type 4-stroke, turbo / intercooled Total power (at 2,100rpm) -SAE J1995 ..... 783kW (1,050hp) net power (at 2,100rpm) - SAE J1349 ..... 728kW (976hp) maximum torque (at 1,300rpm ) ..... 4,629Nm (3,415 lb.ft) number of cylinders / cylinder type ..... 12 / V-shape Bore × stroke ..... Φ140 × 165mm (5.51 × 6.49in) displacement ..... 30.5L (1,846in<sup>3</sup>) engine emissions to meet the country iii, USA EPA Tier 2 and European standards require off-highway vehicle equipment.

## Gearbox

Allison H8610AR electronic control automatic transmission, six forward gears, a reverse gear, and torque converter input configuration type retarder. CEC2 electronic control systems to monitor real-time transmission, engine and vehicle operating data to achieve optimum shift by the ECU, there are two modes of economic power mode and shift patterns to choose from.

|        | Forward gear |      |      |      |     |     | Reverse |
|--------|--------------|------|------|------|-----|-----|---------|
|        | 1st          | 2nd  | 3rd  | 4th  | 5th | 6th | Ratio   |
| km/h   | 8            | 14.7 | 20.1 | 26   | 34  | 48  | 6       |
| mile/h | 9.2          | 12.5 | 16.2 | 21.2 | 30  | 48  | 3.8     |

## Drive axle

After overloading full floating axle, with a spiral bevel gear planetary reductor and two reduction gear wheel, axle housing of a high strength alloy steel. Transmission ratio:

..... drive ratio 2.16: 1 ratio side  
..... 13.75: 1 ratio  
..... 29.70 total: 1

## Suspension

Front suspension: candle independent suspension, having variable damping characteristics oil / gas suspension cylinders can be very good absorption

Receiving road shock, the front suspension of cylinder monolithic.

After Suspension: non-independent suspension, the suspension cylinder having variable damping characteristics of oil / gas, A-shaped frame, lateral stability

Given rod configuration.

Maximum stroke of front suspension cylinders after ..... 320mm (12.6in)  
suspended maximum stroke cylinder ..... 200mm (6.9 in) maximum rear swing axle ..... ± 7 °

## Tire

Tire Type ..... 27.00-49 (E4)

In special conditions, TKPH standard tires (ton-Km / h) value may be overrun, in order to obtain the best choice, please consult the tire manufacturer. Rim Model: 49-19.5 / 4.0.

## Frame

With variable cross section parallel frame box beam, the ring beam structure, the high stress area high strength alloy casting, low stress areas using a flexible low-alloy steel. Hardness and softness frame with good torsional bending and impact resistance, even in the most severe conditions also have a good capacity throughout the life cycle.

## Braking System

Full-hydraulic braking control system, a pressure compensating piston pump driven PTO gearbox to power steering and braking. Separate pilot control dual-circuit brake system with accumulator both before and after, the emergency brake may be provided. Front brake: dry disc brake, the braking force is halved wet road surface.

Brake disc diameter ..... 965mm (38 in) the total area of friction plate ..... 1960 cm<sup>2</sup> (304in<sup>2</sup>)

Rear brake: brake oil cold, creep and having a parking function, a separate cooling system.

The total surface area of the brake ..... 91000cm<sup>2</sup> (14,105in<sup>2</sup>)

Brake: brake pedal controls, respectively front and rear hydraulic brake circuit embodiment. Parking brake: hydraulic pressure is released by the spring on the piston rear brake disk pack is loaded embodiment. Retarding: a joystick and a keyboard buses, respectively, to control the transmission and hydraulic disc brake Retarder.

Emergency brake: by a solenoid valve, and simultaneously driving the parking brake.

## steering system

Hydraulic Steering System neutral steering position normally closed, pressure compensating piston pump, steering valve, steering cylinders and two accumulators composition. Steering sensitivity, reliability, speed regardless of the level of the engine, steering hydraulic steering system can provide a uniform, even if the engine power loss, the accumulator can also provide timely emergency power. Low pressure alarm system configuration, when the system pressure is below the safety value 131bar defined (1890 lbf / in<sup>2</sup>) When alert the driver for proper disposal. The minimum turning diameter ..... 24,000 mm

## Lifting System

A lift pump lift system, the pilot valve lift, the valve lift frame mounted on the outside, and two two-stage lift cylinder composition lifting process is quick and smooth. System pressure ..... 190bar (2755 lbf / in<sup>2</sup>)

Lift pump flow (2100rpm) ..... 413L / min (109USgal / min) Working Time:

Lifting ..... 18 Sec decline  
..... 15 Sec

## Cargo

Double V-shaped configuration facilitates mass concentration compartment, low center of gravity, light weight. A bottom wall and a front plate imported high-strength wear-resistant steel. thickness:

Floor ..... 18mm (0.71in) side  
..... 8mm (0.31in) front panel  
..... 10mm (0.39in) volume:

Paperback (SAE) ..... 42m<sup>3</sup> (55yd<sup>3</sup>)  
Stacker 2: 1 (SAE) ..... 60m<sup>3</sup> (79yd<sup>3</sup>)

## Cab

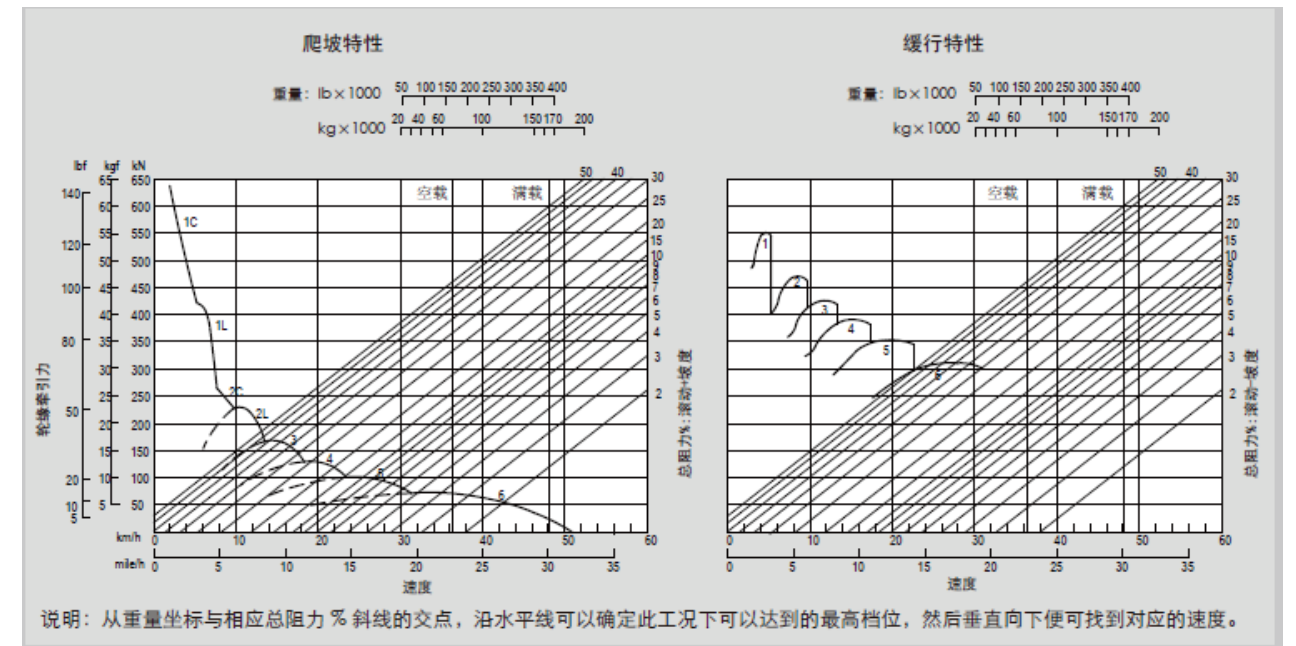
Cab satisfies ROPS / FOPS requirements, liquid crystal instrument, keyboard bus, car instrumentation Units, air suspension seat, new sound design, pressurized cab provide security for the driver.

Clean, quiet, comfortable operating environment.

Cab noise is less than 78db (A) (GB / T16710 \ ISO6393 \ SAE).

## Dynamic Properties

0% based on the graph of making rolling resistance



## Vehicle Dimensions

