

## 主要参数/Main Specifications

项目 Item	单位 Unit	参数 Parameter
<b>尺寸参数 Dimension</b>		
整机全长 Overall Length	mm	10690
整机全宽 Overall Width	mm	3370
整机全高 Overall Height	mm	3793
前中轴距 Wheelbase front-mid	mm	4450
中后轴距 Wheelbase mid-rear	mm	1940
轮中心距 Tire center distance		
前轮 Front	mm	2600
后轮 Mid & Rear	mm	2600
<b>重量参数 Weight</b>		
整车总质量 Total Weight	kg	73000
额定载重 Payload	kg	39000
空载车重 Curb Weight	kg	34000
<b>质量分布 Weight Distribution</b>		
空载 Unload		
前轴 Front	kg	17000 (50%)
后轴 Mid & Rear	kg	17000(50%)
满载 Loaded		
前轴 Front	kg	21600(29%)
后轴 Mid & Rear	kg	51400 (71%)
<b>动力参数 Power Train</b>		
发动机型号 Engine	/	Benz OM502
发动机额定功率 Rated Power	kW /rpm	350/1800
发动机最大扭矩 Max Torque	Nm/rpm	2300/1300
驱动形式 Drive	/	6×6
轮胎 Tires	/	29.5R25
<b>行驶参数 Driving Performance</b>		
最高行驶速度 Max speed	km/h	60
最小通道圆半径 Min Turning Clearance	mm	8865
最大爬坡度 Max Grade ability	%	45
最大转向角 Max Steering Angle	°	± 45
最小离地间隙 Minimum Ground Clearance	mm	565

项目 Item	单位 Unit	参数 Parameter
<b>工作参数 Working Parameter</b>		
装载高度 Loading Height	mm	3180
举升时间 Hoist Time	s	12
举升角度 Hoist Angle	°	70
<b>保养容量 Service Capacities</b>		
燃油箱 Fuel	L	550
液压油箱 Hydraulic Oil	L	300
机油 Engine Oil	L	60
冷却液 Cooling system	L	240
驱动轮边(单个) Axles-Wheel Gear Oil (Each)	L	11.5
驱动桥(单个) Axles-differential (Each)	L	33
<b>货厢容积 Body</b>		
平装 Struck	m <sup>3</sup>	17.5/18.5
2:1堆装 2:1Heaped	m <sup>3</sup>	22.9/24

材料和规格可随时间改变，恕不另行通知  
Materials and specifications may be changed at any time without prior notice

**XCMG**  
**徐工集团**  
徐工徐工 助您成功  
XCMG FOR YOUR SUCCESS

**XDA40 铰接式自卸车**  
**XDA40 ARTICULATED DUMP TRUCK**



地址：徐州经济技术开发区高新路39号  
Address: No.39 Gaoxin Road Economy Technology Development Zone Xuzhou  
全国统一客服热线  
Customer service hotline: 400-110-9999

WWW.XCMG.COM

欢迎关注徐工挖机官方微信：  
1、直接扫码“XCMG-wjix”增加好友。  
2、查找公众账号“XCMG徐工挖机”。  
3、直接扫描右侧二维码。



XCMG1605

- 额定载重 Payload (kg) : 39000
- 额定功率 Rated Power (kW /rpm) : 350/1800
- 最大爬坡度 Max Grade ability (%) : 45

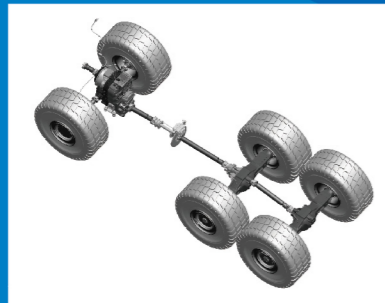
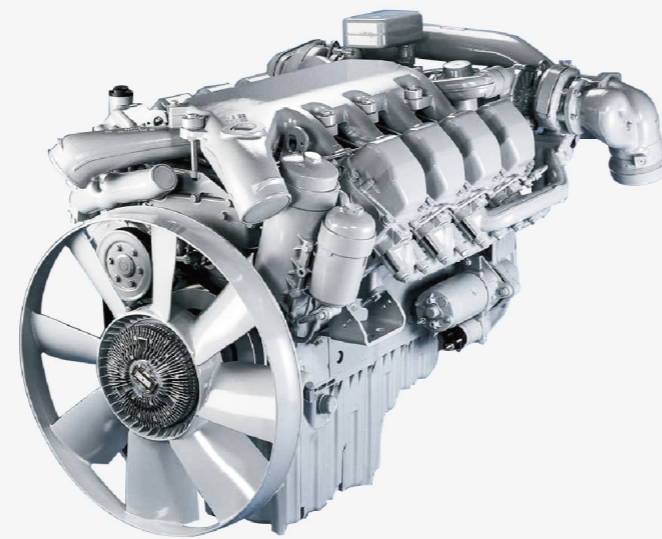
**徐工挖掘机械事业部**  
XCMG EXCAVATOR MACHINERY BUSINESS DEPARTMENT

# 高生产率 HIGH PRODUCTIVITY

## ● 高性能发动机 High Performance Engine

徐工铰接式自卸车以强大的动力和卓越的整机性能，以更低的成本为您提供更高的生产率。

The combination of strong power and outstanding vehicle performance provides higher productivity with less cost.



## ● 先进传动系统 Advanced Driven System

多功能变速箱集成有带闭锁功能的变扭器、一体式液力缓速器等单元，性能先进可靠；变速箱前后轴差速锁驱动能力更强；中轴后轴联动，实时驱动；轮间差速锁有效应对恶劣路况。

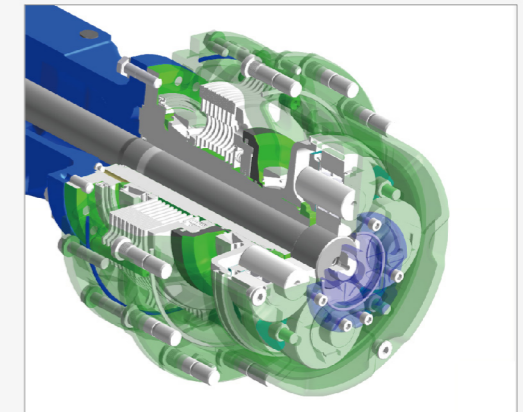
Multifunction transmission integrated with a variable torque converter having locking function, integrated hydraulic retarder unit, advanced performance and reliability. Gear-box shaft differential lock drive with higher ability. The middle and rear drive shaft linked, real-time driving; wheel differential lock to effectively deal with the bad road.

## ● 可靠的制动系统 Advanced Driven System

### ● 行车制动 Service brake

XDA40采用全液压自冷式湿盘式制动系统，该系统确保了车辆的高制动性能和长使用寿命，即使在泥泞的路面，仍保证车辆具有良好的制动性。通过利用强劲的发动机缓行器用来在下坡时控制稳定的速度，在弯道或十字路口前减速，降低了行车制动器的使用，确保了低运营成本和安全运输。

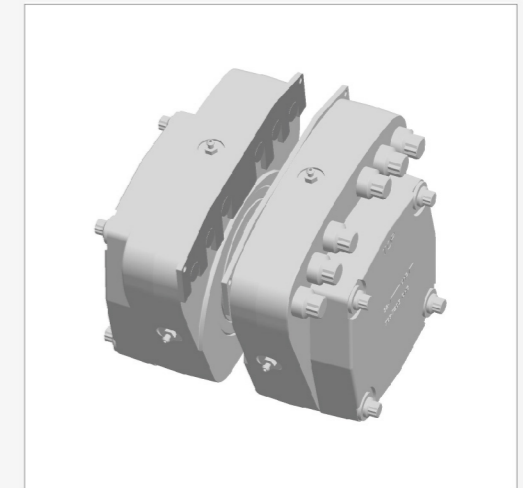
XDA40 adopts self oil cooled disc brakes system, ensure this Vehicle highly reliable and long lifetime. Even in the muddy road, XDA40 also function as a highly responsive. The large-capacity, continuously cooled, wet-multiple disc brakes also function as a highly responsive retarder which gives the operator greater confidence at higher speeds when travelling downhill.



### ● 驻车制动 Parking brake

弹簧加载，液压释放，简单的机械结构设计确保了驻车的可靠，通过液压释放使系统响应迅速。

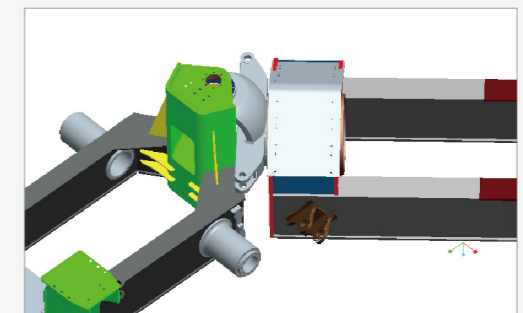
Spring loaded, hydraulic release, simple mechanical structure design to ensure the reliability of the parking brake, through the release of the hydraulic system to respond quickly.



### ● 铰接式转向 Articulated steering

进口变量柱塞泵提供转向油源，流量放大式液压转向，方向盘路感较好、转向响应精度高、转向平稳。配备辅助转向蓄能器。

Import variable plunger pump provides oil source, flow amplifying hydraulic steering, good feeling steering wheel, high precision steering response, steering stable. Equipped with second steering accumulator.



# 驾驶舒适 OPERATE IN COMFORT

## ● 视野开阔 Excellent visibility

符合ISO防落物标准的FOPS/ROPS驾驶室，无A柱设计，空间宽敞，视野开阔。

The fops cab is built from high strength steel ,meeting FOPS/ROPS standard, without A column design, with the broad space and vision.



## ● 舒适的座椅 Comfortable seat

座椅为可调气悬浮式减振高靠背座椅，配备副驾驶座椅。

The seat is adjustable high gas suspension damping adjusters, equipped with the co-pilot seat.



## ● 内饰配备齐全 Complete interior

各种显示仪表、报警器、照明、控制开关、收音机、车载电脑、电动车窗、可倾斜伸缩式方向盘、电动风档雨刷及清洗器、着色玻璃、冷暖空调等配备齐全。

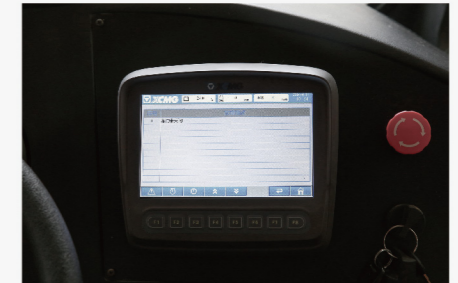
The fully-equipped cab provided all kinds of display instrument, alarm, lighting, control switch, On-board computer, electric Windows, tilting and telescoping steering wheel, electric windshield wiper cleaners, colored glass, air conditioning.



## ● 车辆监测系统 Vehicle monitor system

车辆运行数据及故障报警项目采用液晶显示器和可控仪表配合的显示方式。大尺寸彩色显示屏，界面切换简单，直观清晰，易于理解。

Vehicle running data and fault alarm project adopts touch LCD display and control instrument display mode. A large color monitor improves availability and allows easy navigation between different screens.



## ● 冷却系统 Cooling System

XDA40铰接式自卸车具备优秀的冷却能力，满足在环境温度40℃时自卸车满负荷连续作业的要求。发动机采用可拆卸管带式散热器，维修更换方便。

XDA40 have an excellent Cooling System to meet Full load continuous operation at very high ambient temperatures (40℃). Engine adopts removable belt type radiator , Easy maintenance. Generator is used of forced air cooling system.

# 行驶平稳 SMOOTH AND STEADY

## ● 车架 Vehicle Frame

车架由铰接体、前车架及后车架组成。铰接体允许后车架相对于前车架自由摆动和旋转，保证全部驱动轮良好的地面接触，从而提供出色的机动能力和稳定的高速运输能力。铰接体采用铸件。前后车架采用优质低合金高强度钢制造，主要部件采用铸件，提高车架的强度。重要焊缝100%经超声波探伤。采用计算机辅助设计，并进行有限元优化分析。

Vehicle frame is composed of articulated hitch, front frame and rear frame. Articulated hitch allows the rear frame to free oscillate and rotate, relative to the front frame, ensure all of the driving wheels shall be good contact with the ground in order to provide excellent mobility and stability of the high speed transport capacity. The articulated hitch is used of casting. All of the frames are made of high quality high strength low alloy steel, The main parts adopts casting, improving the strength of the frame. All of Important weld is tested 100% by ultrasonic testing. This vehicle body is designed by CAD and analysed by FEM.



### ● 货厢 Body

货厢采用全焊接结构，由高强度HB400耐磨钢板制造，坚固耐用；倾卸角度大，倾卸离地间隙大，装载高度低，极利于物料的快速装卸。

Body adopts full welder structure with high strength wear-resistant steel plate HB400; Bigger Dump angle, larger ground clearance, lower loading height, very good for rapid loading and unloading of materials.



### ● 悬架系统 Suspension

油气悬挂与A型架结合，保证车辆具有良好的车辆稳定性与越野性能；XDA40铰接车的悬架结构能够改善恶劣路面对整车的冲击，提高整车的平顺性及操纵稳定性。

The combination of oil-gas suspension and A frame ensures good vehicle stability and off-road performance. XDA40 articulated dump truck suspension structure can improve the impact of poor road in the face of vehicle, improve vehicle ride comfort and handling stability.



### ● 举升 Hoisting

货厢举升动作通过一个举升阀组，操纵两个单级双作用、伸缩式油缸完成。

Hoisting is completed by a valve group to manipulate single secondary double-acting, telescopic cylinder.



### ● 轮胎 Tires/Rims

选用断面扁平的工程轮胎，保证足够的接地面积，使整机获得足够的牵引力，提高了车辆的通过性。

Selection of flat tire, to ensure adequate ground area, so that the whole machine to obtain sufficient traction force, improve the passing capacity.



### ● 照明系统 Illuminating System

照明系统由前大灯、转向灯、轮廓灯、倒车灯、制动灯、雾灯、驾驶室照明灯等组成。照明与警示灯的位置合理，满足各种天气环境下作业时的照明与警示要求。控制和工作电压为DC 24V。

Illuminating System is composed by headlamps, turn lights, side marker lights, reversing lights, brake lamp, foglights, ladder lights and Cockpit lights ,etc.Rational arrangement of lighting and caution lights meet requirements of lighting and caution.The controlling and working voltage is DC 24V.



## 维护方便 EASY MAINTENANCE

### ● 自动润滑系统 Automatic lubrication system

自动润滑系统定期润滑各部件，减少保养时间，降低维修成本。

Controlled amount of lubricant is delivered timely to lube points, reducing service time and costs.



### ● 安全装置 Safety Device

驾驶室配备后窗保护格栅、三点式座椅安全带、逃生锤、急停开关。整车配备倒车影像系统、紧急信号灯、旋转报警灯、倒车警告、转向锁止杆、货厢支撑杆、辅助转向和制动蓄能器、防滑行走表面、护栏等。

The cab equipped with rear window protection grill, The three-point seat belts, Escape hammer, emergency stop button, Rotating lamp, Reversing warning, Steering locking lever, Boxcar support bar, Assisted steering and brake accumulator, slip resistant surface, guardrail, etc.



### ● 随机备件及工具 Carried spares and tools

配备一套随机工具和易损件。

Equiped a set of carried tools and wearing parts.

